

WILDLIFE AND WIRELESS: POLICY IS NEEDED TO PROTECT FLORA AND FAUNA

Escalating levels of wireless RF* radiation from the proliferation of 4G and 5G telecommunication antennas pose serious risks to wildlife and the natural world. Accumulating research studies have found numerous adverse effects at levels much lower than the Federal Communication Commission (FCC) legal limits for cell tower emissions.

No Safety Standards

The FCC's federal exposure limits were designed for humans, not wildlife. "Safe" levels of RF exposure for wildlife and plants have never been developed by any scientific or government entity.

Serious Regulatory Gaps

There is no federal agency measuring or monitoring the current levels of RF in the environment, monitoring the scientific research or gathering data on wildlife impacts from wireless infrastructure.

No Environmental Review

There has been no review of the environmental impact of the 5G infrastructure buildout which the FCC states will require 800,000 new wireless "small" cells.

Higher Exposures

Birds, insects and other airborne species fly, nest and perch close to transmitting antennas. "Small" cells and cell towers emit plumes of RF radiation which can greatly exceed FCC limits, even when measured at distances 10 to sometimes over 40 feet away from the antennas. Yet base station antenna emissions are "legal" because telecom compliance tests for RF only consider areas inhabited by people. Wildlife habitat is ignored.

Pollinators at Risk

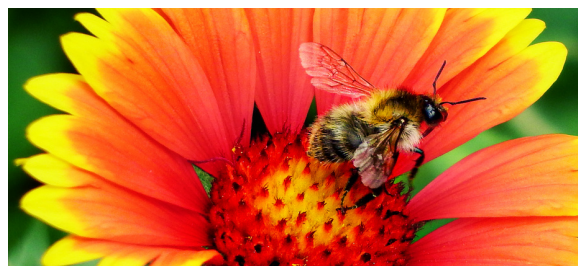
5G networks will include higher frequencies — submillimeter and millimeter waves — which studies have found uniquely absorb at higher intensities into the bodies of bees and insects. Studies on bees have long linked cell tower frequencies to increased stress, decreased honey production and altered pupal development.

Damage to Tree Canopy

Trees are being cut down, aggressively trimmed and their roots disturbed to build "small" cell infrastructure. A ten-year field study found damage to trees after years of RF exposure from cell antennas.

The need for regulatory action is urgent. Immediate steps must be taken to reduce environmental levels of RF and develop safety standards to ensure wildlife and their habitat are protected now and in the future.

*RF = radiofrequency



"In addition to its impact on humans, radiofrequency radiation poses harmful effects to flora and fauna."

— Natural Resources Defense Council Amicus Brief in EHT et al. v the FCC

SCIENCE ON FLORA, FAUNA, WIRELESS AND NON-IONIZING RADIATION

Adequate Science To Trigger Regulatory Action To Protect Wildlife

A landmark research review by U.S experts of over 1,200 studies on the effects of non-ionizing radiation to wildlife entitled “Effects of non-ionizing electromagnetic fields on flora and fauna” published in *Reviews on Environmental Health* found adverse effects at very low intensities, including impacts to orientation and migration, reproduction, mating, nest, den building and survivorship. (Levitt et al., 2021)

“A review of the ecological effects of RF-EMF” published in *Environment International* found RF had a significant effect on birds, insects, other vertebrates, other organisms and plants in 70% of the studies. Development and reproduction in birds and insects were strongly affected. (Cucurachi et al., 2013)

The research review “Electromagnetic radiation as an emerging driver factor for the decline of insects” published in *Science of the Total Environment* found “sufficient evidence” of effects to insects, including impacts to flight, foraging, feeding, short-term memory and mortality. (Balmori, 2021)

A 2022 Oregon State University study investigated the long-term behavioral effects to zebrafish from short-term exposures to 5G’s midband 3.5 GHz. The researchers found “subtle but significant abnormal responses...that suggest potential long-term behavioral effects,” and they concluded, “Overall, our study suggests the impacts of RFRs on the developing brain, behavior, and the metabolome should be further explored.” (Dasgupta et al., 2022)

U.S. RF Exposure Limits Unchanged Since 1996

The U.S. has the most lenient rules regarding allowable emissions from cell towers. Many countries, such as Italy, Switzerland, Israel, China, Russia and India, have environmental RF limits 10 to 100 times lower (more stringent).

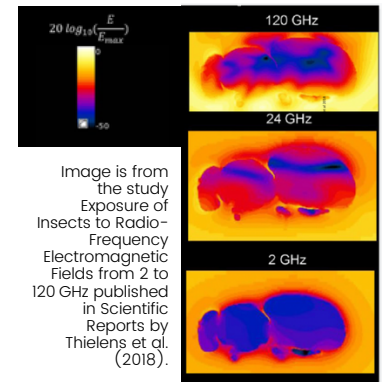
India dropped its RF limits to 1/10th of U.S. limits after an Inter-Ministerial Committee set up by the Ministry of Environment and Forests reviewed the research on birds, bees, plants and animals and found the majority of studies *showed impacts*.

“The electromagnetic radiation standards used by the Federal Communications Commission (FCC) continue to be based on thermal heating, a criterion now nearly 30 years out of date and inapplicable today.”

– U.S. Department of the Interior letter that details studies showing impacts to birds from cell tower radiation.

“The Federal Communications Commission also completely failed even to acknowledge, let alone respond to, comments concerning the impact of RF radiation on the environment.”

– U.S. Court of Appeals for the D.C. Circuit Ruling in EHT et al. v. FCC



This is an image of the normalized electric field strength (dB) into a Western Honey Bee at various wireless frequencies. It shows that as the wavelengths are higher (as will be used in 5G) the absorption in the bodies of insects also increases, even when the power is the same.

Norway Maple Tree, Damaged by Cell Antennas



Side facing the RF transmitter: 2,100 $\mu\text{W}/\text{m}^2$ Opposite side: 290 $\mu\text{W}/\text{m}^2$



Image: Tree Observation Guide by Helmut Breunig 2017 .

WILDLIFE , WIRELESS AND NON IONIZING ELECTROMAGNETIC FIELDS

SCIENTIFIC RESEARCH

REVIEWS

Balmori, A. (2015). Anthropogenic radiofrequency electromagnetic fields as an emerging threat to wildlife orientation. *Science of The Total Environment*, 518–519, 58–60.

Balmori A. (2014). Electrosmog and species conservation. *Science of The Total Environment*, 496:314-316

Cucurachi, S., Tamis, W. L. M., Vijver, M. G., Peijnenburg, W. J. G. M., Bolte, J. F. B., & de Snoo, G. R. (2013). A review of the ecological effects of radiofrequency electromagnetic fields (RF-EMF). *Environment International*, 51, 116–140.

Levitt BB, Lai HC and Manville AM II (2022) Low-level EMF effects on wildlife and plants: What research tells us about an ecosystem approach. *Front. Public Health* 10:1000840. doi: 10.3389/fpubh.2022.1000840

Levitt, B. B., Lai, H. C., & Manville, A. M. (2021). Effects of non-ionizing electromagnetic fields on flora and fauna, Part 3. Exposure standards, public policy, laws, and future directions. *Reviews on Environmental Health*.

Levitt, B. B., Lai, H. C., & Manville, A. M. (2022a). Effects of non-ionizing electromagnetic fields on flora and fauna, part 1. Rising ambient EMF levels in the environment. *Reviews on Environmental Health*, 37(1), 81–122.

Levitt, B. B., Lai, H. C., & Manville, A. M. (2022b). Effects of non-ionizing electromagnetic fields on flora and fauna, Part 2 impacts: How species interact with natural and man-made EMF. *Reviews on Environmental Health*, 37(3), 327–406.

BIRDS

Balmori A. (2022). Corneal opacity in Northern Bald Ibises (*Geronticus eremita*) equipped with radio transmitters. *Electromagnetic Biol Med.*174-176.

Fernie, K. J., & Reynolds, S. J. (2005). The effects of electromagnetic fields from power lines on avian reproductive biology and physiology: A review. *Journal of Toxicology and Environmental Health. Part B, Critical Reviews*, 8(2), 127–140

Schwarze, S., Schneider, N.-L., Reichl, T., Dreyer, D., Lefeldt, N., Engels, S., Baker, N., Hore, P. J., & Mouritsen, H. (2016). Weak Broadband Electromagnetic Fields are More Disruptive to Magnetic Compass Orientation in a Night-Migratory Songbird (*Erithacus rubecula*) than Strong Narrow-Band Fields. *Frontiers in Behavioral Neuroscience*, 10.

Tonelli, B. A., Youngflesh, C., & Tingley, M. W. (2023). Geomagnetic disturbance associated with increased vagrancy in migratory landbirds. *Scientific Reports*, 13(1), Article 1.

Wiltshko, R., Thalau, P., Gehring, D., Nießner, C., Ritz, T., & Wiltshko, W. (2015). Magnetoreception in birds: The effect of radio-frequency fields. *Journal of The Royal Society Interface*, 12(103), 20141103.

WILDLIFE , WIRELESS AND NON IONIZING ELECTROMAGNETIC FIELDS

SCIENTIFIC RESEARCH

POLLINATORS

A. Lázaro, A. Chroni, T. Tscheulin, J. Devalez, C. Matsoukas, & T. Petanidou. (2016). Electromagnetic radiation of mobile telecommunication antennas affects the abundance and composition of wild pollinators. *Journal of Insect Conservation*, 20(2), 315–324. <https://doi.org/10.1007/s10841-016-9868-8>

Adelaja, O. J., Ande, A. T., Abdulraheem, G. D., Oluwakorode, I. A., Oladipo, O. A., & Oluwajobi, A. O. (2021). Distribution, diversity and abundance of some insects around a telecommunication mast in Ilorin, Kwara State, Nigeria. *Bulletin of the National Research Centre*, 45(1), 222.

Balmori A. (2021) Electromagnetic radiation as an emerging driver factor for the decline of insects. *Science of the Total Environment*. 767: 144913

Borre, E. D., Joseph, W., Aminzadeh, R., Müller, P., Boone, M. N., Josipovic, I., Hashemizadeh, S., Kuster, N., Kühn, S., & Thielens, A. (2021). Radio-frequency exposure of the yellow fever mosquito (*A. aegypti*) from 2 to 240 GHz. *PLOS Computational Biology*, 17(10), e1009460.

Favre, D. (2011). Mobile phone-induced honeybee worker piping. *Apidologie*, 42(3), 270–279.

Fedele, G., Edwards, M. D., Bhutani, S., Hares, J. M., Murbach, M., Green, E. W., Dissel, S., Hastings, M. H., Rosato, E., & Kyriacou, C. P. (2014). Genetic analysis of circadian responses to low frequency electromagnetic fields in *Drosophila melanogaster*. *PLoS Genetics*, 10(12), e1004804.

Lee, K.-S., Choi, J.-S., Hong, S.-Y., Son, T.-H., & Yu, K. (2008). Mobile phone electromagnetic radiation activates MAPK signaling and regulates viability in *Drosophila*. *Bioelectromagnetics*, 29(5), 371–379.

Li, S.-S., Zhang, Z.-Y., Yang, C.-J., Lian, H.-Y., & Cai, P. (2013). Gene expression and reproductive abilities of male *Drosophila melanogaster* subjected to ELF-EMF exposure. *Mutation Research. Genetic Toxicology and Environmental Mutagenesis*, 758(1–2), 95–103.

Lopatina, N. G., Zachepilo, T. G., Kamyshev, N. G., Dyuzhikova, N. A., & Serov, I. N. (2019). Effect of Non-Ionizing Electromagnetic Radiation on Behavior of the Honeybee, *Apis mellifera* L. (Hymenoptera, Apidae). *Entomological Review*, 99(1), 24–29.

Lupi, D., Palamara Mesiano, M., Adani, A., Benocci, R., Giacchini, R., Parenti, P., Zambon, G., Lavazza, A., Boniotti, M. B., Bassi, S., Colombo, M., & Tremolada, P. (2021a). Combined Effects of Pesticides and Electromagnetic-Fields on Honeybees: Multi-Stress Exposure. *Insects*, 12(8), 716.

erator affects the sleep of *Drosophila melanogaster*. *Environmental Pollution (Barking, Essex: 1987)*, 283, 117087.

WILDLIFE , WIRELESS AND NON IONIZING ELECTROMAGNETIC FIELDS

SCIENTIFIC RESEARCH

Manta, A. K., Papadopoulou, D., Polyzos, A. P., Fragopoulou, A. F., Skouroliakou, A. S., Thanos, D., Stravopodis, D. J., & Margaritis, L. H. (2017). Mobile-phone radiation-induced perturbation of gene-expression profiling, redox equilibrium and sporadic-apoptosis control in the ovary of *Drosophila melanogaster*. *Fly*, 11(2), 75-95.

Mahmoud EA and Gabarty A (2021) "Impact of Electromagnetic Radiation on Honey Stomach Ultrastructure and the Body Chemical Element Composition of *Apis mellifera*." *African Entomology* 29(1), 32-41, (23 March).

Molina-Montenegro MA, Acuña-Rodríguez IS, Ballesteros GI, Baldelomar M, Torres-Díaz C, Broitman BR, Vázquez DP. (2023) Electromagnetic fields disrupt the pollination service by honeybees. *Sci Adv*. May 12;9(19)

Migdał, P., Berbec, E., Bieńkowski, P., Plotnik, M., Murawska, A., & Latarowski, K. (2022b). Exposure to Magnetic Fields Changes the Behavioral Pattern in Honeybees (*Apis mellifera* L.) under Laboratory Conditions. *Animals: An Open Access Journal from MDPI*, 12(7), 855.

Odemer, R., & Odemer, F. (2019). Effects of radiofrequency electromagnetic radiation (RF-EMF) on honey bee queen development and mating success. *Science of The Total Environment*, 661, 553-562.

Santhosh Kumar, S. (2018). Colony Collapse Disorder (CCD) in Honey Bees Caused by EMF Radiation. *Bioinformation*, 14(9), 421-424.

Thielens, A., Bell, D., Mortimore, D. B., Greco, M. K., Martens, L., & Joseph, W. (2018). Exposure of Insects to Radio-Frequency Electromagnetic Fields from 2 to 120 GHz. *Scientific Reports*, 8(1), 3924.

Thielens A, Greco MK, Verloock L, Martens L, Joseph W. Radio-Frequency Electromagnetic Field Exposure of Western Honey Bees. *Scientific Reports*. 2020 Jan 16;10(1):461.

Wang, Y., Jiang, Z., Zhang, L., Zhang, Z., Liao, Y., & Cai, P. (2022b). 3.5-GHz radiofrequency electromagnetic radiation promotes the development of *Drosophila melanogaster*. *Environmental Pollution (Barking, Essex: 1987)*, 294, 118646.

Wang, Y., Zhang, H., Zhang, Z., Sun, B., Tang, C., Zhang, L., Jiang, Z., Ding, B., Liao, Y., & Cai, P. (2021). Simulated mobile communication frequencies (3.5 GHz) emitted by a signal generator affects the sleep of *Drosophila melanogaster*. *Environmental Pollution (Barking, Essex: 1987)*, 283, 117087.

AMPHIBIAN

Balmori A. (2010). Mobile phone mast effects on common frog (*Rana temporaria*) tadpoles: the city turned into a laboratory. *Electromagn Biol Med*. Jun;29 (1-2): 31-5.

Balmori, A. (2006). The incidence of electromagnetic pollution on the amphibian decline: Is this an important piece of the puzzle? *Toxicological & Environmental Chemistry*, 88(2), 287-299.

WILDLIFE , WIRELESS AND NON IONIZING ELECTROMAGNETIC FIELDS

SCIENTIFIC RESEARCH

PLANTS

Halgamuge, M. N. (2017). Review: Weak radiofrequency radiation exposure from mobile phone radiation on plants. *Electromagnetic Biology and Medicine*, 36(2), 213–235.

Halgamuge, M. N., Yak, S. K., & Eberhardt, J. L. (2015). Reduced growth of soybean seedlings after exposure to weak microwave radiation from GSM 900 mobile phone and base station. *Bioelectromagnetics*, 36(2), 87–95.

Haggerty, K. (2010). Adverse Influence of Radio Frequency Background on Trembling Aspen Seedlings: Preliminary Observations. *International Journal of Forestry Research*, 836278.

Kaur, S., Vian, A., Chandel, S., Singh, D. H., Batish, D., & Kohli, R. (2021). Sensitivity of plants to high frequency electromagnetic radiation: Cellular mechanisms and morphological changes. *Reviews in Environmental Science and Bio/Technology*, 20.

Soran, M.-L., Stan, M., Niinemets, Ü., & Copolovici, L. (2014). Influence of microwave frequency electromagnetic radiation on terpene emission and content in aromatic plants. *Journal of Plant Physiology*, 171(15), 1436–1443.

Stefi, A. L., Margaritis, L. H., & Christodoulakis, N. S. (2016). The effect of the non ionizing radiation on cultivated plants of Arabidopsis thaliana (Col.). *Flora*, 223, 114–120.

Waldmann-Selsam, C., Balmori-de la Puente, A., Breunig, H., & Balmori, A. (2016). Radiofrequency radiation injures trees around mobile phone base stations. *Science of The Total Environment*, 572, 554–569.

Zhong, Z., Wang, X., Yin, X., Tian, J., & Komatsu, S. (2021). Morphophysiological and Proteomic Responses on Plants of Irradiation with Electromagnetic Waves. *International Journal of Molecular Sciences*, 22(22), Article 22.

MARINE

Hutchison, Z. L., Gill, A. B., Sigray, P., He, H., & King, J. W. (2020). Anthropogenic electromagnetic fields (EMF) influence the behaviour of bottom-dwelling marine species. *Scientific Reports*, 10(1), 4219.

Scott, K., Harsanyi, P., Easton, B. A. A., Piper, A. J. R., Rochas, C. M. V., & Lyndon, A. R. (2021). Exposure to Electromagnetic Fields (EMF) from Submarine Power Cables Can Trigger Strength-Dependent Behavioural and Physiological Responses in Edible Crab, Cancer pagurus (L.). *Journal of Marine Science and Engineering*, 9(7), Article 7.

WILDLIFE , WIRELESS AND NON IONIZING ELECTROMAGNETIC FIELDS

SCIENTIFIC RESEARCH

PLANTS

Halgamuge, M. N. (2017). [Review: Weak radiofrequency radiation exposure from mobile phone radiation on plants.](#) *Electromagnetic Biology and Medicine*, 36(2), 213–235.

Halgamuge, M. N., Yak, S. K., & Eberhardt, J. L. (2015). [Reduced growth of soybean seedlings after exposure to weak microwave radiation from GSM 900 mobile phone and base station.](#) *Bioelectromagnetics*, 36(2), 87–95.

Haggerty, K. (2010). [Adverse Influence of Radio Frequency Background on Trembling Aspen Seedlings: Preliminary Observations.](#) *International Journal of Forestry Research*, 836278.

Kaur, S., Vian, A., Chandel, S., Singh, D. H., Batish, D., & Kohli, R. (2021). [Sensitivity of plants to high frequency electromagnetic radiation: Cellular mechanisms and morphological changes.](#) *Reviews in Environmental Science and Bio/Technology*, 20.

Soran, M.-L., Stan, M., Niinemets, Ü., & Copolovici, L. (2014). [Influence of microwave frequency electromagnetic radiation on terpene emission and content in aromatic plants.](#) *Journal of Plant Physiology*, 171(15), 1436–1443.

Stefi, A. L., Margaritis, L. H., & Christodoulakis, N. S. (2016). [The effect of the non ionizing radiation on cultivated plants of Arabidopsis thaliana \(Col.\).](#) *Flora*, 223, 114–120.

Waldmann-Selsam, C., Balmori-de la Puente, A., Breunig, H., & Balmori, A. (2016). [Radiofrequency radiation injures trees around mobile phone base stations.](#) *Science of The Total Environment*, 572, 554–569.

Zhong, Z., Wang, X., Yin, X., Tian, J., & Komatsu, S. (2021). [Morphophysiological and Proteomic Responses on Plants of Irradiation with Electromagnetic Waves.](#) *International Journal of Molecular Sciences*, 22(22), Article 22.

Additional Studies To Know

Balmori A. (2010). [Mobile phone mast effects on common frog \(Rana temporaria\) tadpoles: the city turned into a laboratory.](#) *Electromagn Biol Med.* Jun;29 (1-2): 31-5.

Hutchison, Z. L., Gill, A. B., Sigray, P., He, H., & King, J. W. (2020). [Anthropogenic electromagnetic fields \(EMF\) influence the behaviour of bottom-dwelling marine species.](#) *Scientific Reports*, 10(1), 4219.

Scott, K., Harsanyi, P., Easton, B. A. A., Piper, A. J. R., Rochas, C. M. V., & Lyndon, A. R. (2021). [Exposure to Electromagnetic Fields \(EMF\) from Submarine Power Cables Can Trigger Strength-Dependent Behavioural and Physiological Responses in Edible Crab, Cancer pagurus \(L.\).](#) *Journal of Marine Science and Engineering*, 9(7), Article