

How to Reduce Exposure to Radiofrequency Energy from Cell Phones



The use of cell phones has increased dramatically in recent years, including among children and young adults. These phones put out radio frequency (RF) energy (a kind of radiation).

Some scientists and public health officials believe RF energy may affect human

health. This guidance document describes RF energy, lists some of the main health concerns, and provides guidance on how people can reduce their exposure.

Why are people concerned about exposure to RF energy from cell phones?

Over the last 15 years some laboratory experiments and human health studies have suggested the possibility that long-term, high use of cell phones may be linked to certain types of cancer and other health effects, including:

- brain cancer and tumors of the acoustic nerve (needed for hearing and maintaining balance) and salivary glands
- lower sperm counts and inactive or less mobile sperm
- headaches and effects on learning and memory, hearing, behavior, and sleep

These studies do not establish the link definitely, however, and scientists disagree about whether cell phones cause these health problems and how great the risks might be. This document is intended to provide guidance for those people who want to reduce their own and their families' exposures to RF energy from cell phones, despite this uncertainty.

What is RF energy?

Cell phones work by sending and receiving signals to and from cell phone towers. These signals are a form of electromagnetic radiation called radiofrequency (RF) energy. Other sources of RF energy include cell phone towers, TV and radio transmitters, smart meters, and microwave ovens. When a phone sends signals to a tower, the RF energy goes from the phone's antenna out in all directions, including into the head and body of the person using the phone. Cell phones also emit RF radiation when using Wi-Fi and/or Bluetooth, but at lower levels.

RF energy is not as powerful or as damaging to cells or DNA as some other kinds of electromagnetic radiation, such as X-rays or UV rays from the sun. Some scientific studies have, however, suggested that there may be increased health risks from exposure to RF energy.

How can you reduce your exposure?

Keep your phone away from your body. Keeping your phone just a few feet away from you can make a big difference.

- **When you talk on your cell phone, avoid holding it to your head—use the speakerphone or a headset instead.** Wireless (Bluetooth) and wired headsets emit much less RF energy than cell phones.
- **Send text messages instead of talking on the phone.**
- **If you are streaming or if you are downloading or sending large files, try to keep the phone away from your head and body.**
- **Carry your cell phone in a backpack, briefcase, or purse; NOT in a pocket, bra or belt holster.** Because your phone's antenna tries to stay connected with a cell tower whenever it's on, it emits some RF energy even when you are not using it. It does not emit RF energy when it's in airplane mode. (Airplane mode turns off cellular, Wi-Fi, and Bluetooth.)

Reduce or avoid using your cell phone when it is sending out high levels of RF energy. This happens mainly when:

- **You see only one or two bars displayed.** Cell phones put out more RF energy to connect with cell towers when the signal is weak. If you must use your phone when the signal is weak, try to follow the other guidance on this page.
- **You are in a fast-moving car, bus, or train.** Your phone puts out more RF energy to maintain connections to avoid dropping calls as it switches connections from one cell tower to the next unless it is in airplane mode.
- **You are streaming audio or video, or downloading or sending large files.** To watch movies or listen to playlists on your phone, download them first, then switch to airplane mode while you watch or listen.

Don't sleep with your phone in your bed or near your head. Unless the phone is off or in airplane mode, keep it at least a few feet away from your bed.

Take off the headset when you're not on a call. Headsets release small amounts of RF energy even when you are not using your phone.



What about children?

Children may be more at risk for harm from exposure to RF energy because:

- RF energy can reach a larger area of a child's brain than an adult's brain.
- A child's brain and body grow and develop through the teen years. During this time, the body may be more easily affected by RF energy and the effect may be more harmful and longer lasting.
- A child who uses a cell phone will have many more years of exposure to RF energy in his or her lifetime than someone who started using a cell phone as an adult.

There is not a lot of research about the effects of cell phone RF energy on children or teenagers, but a few studies have shown that there may be hearing loss or ringing in the ears, headaches, and decreased general well-being.

Don't rely on a "radiation shield" or other products claiming to block RF energy, electromagnetic fields, or radiation from cell phones. According to the U.S. Federal Trade Commission, products that interfere with the phone's signal may force it to work harder and emit more RF energy in order to stay connected, possibly increasing your exposure.

For more information, please visit these websites:

U.S. Centers for Disease Control and Prevention:

www.cdc.gov/nceh/radiation/cell_phones_faq.html

www.cdc.gov/nceh/radiation/factsheets/224613_faq_cell-phones-and-your-health.pdf

U.S. Federal Communications Commission (FCC):

www.fcc.gov/engineering-technology/electromagnetic-compatibility-division/radio-frequency-safety/faq/rf-safety

(The FCC is responsible for regulating RF emissions from cell phones; the regulations were last updated in 1996.)

U.S. Federal Trade Commission (FTC):

www.consumer.ftc.gov/articles/0109-cell-phone-radiation-scams

World Health Organization:

www.who.int/mediacentre/factsheets/fs193/en/

American Academy of Pediatrics

www.healthychildren.org/English/safety-prevention/all-around/Pages/Cell-Phone-Radiation-Childrens-Health.aspx

Consumer Reports:

www.consumerreports.org/cro/smartphones/cell-phone-radiation



How to Reduce Exposure to Radiofrequency Energy from Cell Phones



The use of cell phones has increased dramatically in recent years, including among children and young adults. These phones put out radio frequency (RF) energy.

While scientists are still debating the possible link between cell phone use and health problems, this guidance document describes RF energy, lists some of the main health concerns, and provides guidance on how people can reduce their exposure now.

Why are people concerned about exposure to RF energy from cell phones?

Over the last 15 years, some laboratory experiments and human health studies have suggested the possibility that long-term, high use of cell phones may be linked to certain types of cancer and other health effects, including:

- brain cancer and tumors of the acoustic nerve (needed for hearing and maintaining balance) and salivary glands
- lowersperm counts and inactive or less mobile sperm
- headaches and effects on learning and memory,

What is RF energy?

Cell phones work by sending and receiving signals to and from cell phone towers. These signals are a form of electromagnetic radiation called radiofrequency (RF) energy. Other sources of RF energy include cell phone towers, TV and radio transmitters, smart meters, and microwave ovens. When a phone sends signals to a tower, the RF energy goes from the phone's antenna out in all directions, including into the head and body of the person using the phone. Cell phones also emit RF energy when using Wi-Fi and/or Bluetooth, but at lower levels.

RF energy is not as powerful or as damaging to cells or DNA as some other kinds of electromagnetic radiation, such as X-rays or UV rays from the sun. Some scientific studies have, however, suggested that there may be increased health risks from exposure to RF energy.

hearing, behavior, and sleep

These studies do not establish the link definitely, however, and scientists disagree about whether cell phones cause these health problems and how great the risks might be. This document is intended to provide guidance for those people who want to reduce their own and their families' exposures to RF energy from cell phones, despite this uncertainty.

DRAFT

How to reduce your exposure

Keep your phone away from your body. Keeping your phone just a few feet away from you can make a big difference.

- **When you talk on your cell phone, avoid holding it to your head—use the speakerphone or a headset instead.** Wireless (Bluetooth) and wired headsets emit much less RF energy than cell phones.
- **Send text messages instead of talking on the phone.**
- **If you are streaming or if you are downloading or sending large files, try to keep the phone away from your head and body.**
- **Carry your cell phone in a backpack, briefcase, or purse; NOT in a pocket, bra or belt holster.** Because your phone's antenna tries to stay connected with a cell tower whenever it's on, it emits some RF energy even when you are not using it. It does not emit RF energy when it's in airplane mode. (Airplane mode turns off cellular, Wi-Fi, and Bluetooth.)

Reduce or avoid using your cell phone when it is sending out high levels of RF energy. This happens mainly when:

- **You see only one or two bars displayed.** Cell phones put out more RF energy to connect with cell towers when the signal is weak. If you must use your phone when the signal is weak, try to follow the other guidance on this page.
- **You are in a fast-moving car, bus, or train.** Your phone puts out more RF energy to maintain connections to avoid dropping calls as it switches connections from one cell tower to the next unless it is in airplane mode.
- **You are streaming audio or video, or downloading or sending large files.** To watch movies or listen to playlists on your phone, download them first, then switch to airplane mode while you watch or listen.

Don't sleep with your phone in your bed or near your head. Unless the phone is off or in airplane mode, keep it at least a few feet away from your bed.

Take off the headset when you're not on a call. Headsets release small amounts of RF energy even when you are not using your phone.



What about children?

Children may be more at risk for harm from exposure to RF energy because:

- RF energy can reach a larger area of a child's brain than an adult's brain.
- A child's brain and body grow and develop through the teen years. During this time, the body may be more easily affected by RF energy and the effect may be more harmful and longer lasting.
- A child who uses a cell phone will have many more years of exposure to RF energy in his or her lifetime than someone who started using a cell phone as an adult.

There is not a lot of research about the effects of cell phone RF energy on children or teenagers, but a few studies have shown that there may be hearing loss or ringing in the ears, headaches, and decreased general well-being.

Don't rely on a "radiation shield" or other products claiming to block RF energy, electromagnetic fields, or radiation from cell phones. According to the U.S. Federal Trade Commission, products that interfere with the phone's signal may force it to work harder and emit more RF energy in order to stay connected, possibly increasing your exposure.

For more information, please visit these websites:

U.S. Centers for Disease Control and Prevention:

www.cdc.gov/nceh/radiation/cell_phones_faq.html

www.cdc.gov/nceh/radiation/factsheets/224613_faq_cell-phones-and-your-health.pdf

U.S. Federal Communications Commission (FCC):

www.fcc.gov/engineering-technology/electromagnetic-compatibility-division/radio-frequency-safety/faq/rf-safety

(The FCC is responsible for regulating RF emissions from cell phones; the regulations were last updated in 1996.)

U.S. Federal Trade Commission (FTC):

www.consumer.ftc.gov/articles/0109-cell-phone-radiation-scams

World Health Organization:

www.who.int/mediacentre/factsheets/fs193/en/

American Academy of Pediatrics

www.healthychildren.org/English/safety-prevention/all-around/Pages/Cell-Phone-Radiation-Childrens-Health.aspx

Consumer Reports:

www.consumerreports.org/cro/smartphones/cell-phone-radiation



How to Reduce Exposure to Radiofrequency Energy from Cell Phones



The use of cell phones has increased dramatically in recent years, including among children and young adults. These phones put out radio frequency (RF) energy (a kind of radiation).

Some scientists and public health officials believe RF energy may affect human

health. This guidance document describes RF energy, lists some of the main **potential** health concerns, and provides guidance on how people can reduce their exposure.

Why are people concerned about exposure to RF energy from cell phones?

Although the science is still evolving, Over the last 15 years some laboratory experiments and human health studies have suggested the possibility that long-term, high use of cell phones may be linked to certain types of cancer and other health effects, including:

- brain cancer and tumors of the acoustic nerve (needed for hearing and maintaining balance) and salivary glands
- lowers sperm counts and inactive or less mobile sperm
- headaches and effects on learning and memory, hearing, behavior, and sleep

These studies do not establish the link definitely, however, and scientists disagree about whether cell phones cause these health problems and how great the risks might be. This document is intended to provide guidance for those people who want to reduce their own and their families' exposures to RF energy from cell phones, despite this uncertainty.

What is RF energy?

Cell phones work by sending and receiving signals to and from cell phone towers. These signals are a form of electromagnetic radiation called radiofrequency (RF) energy. Other sources of RF energy include cell phone towers, TV and radio transmitters, smart meters, and microwave ovens. When a phone sends signals to a tower, the RF energy goes from the phone's antenna out in all directions, including into the head and body of the person using the phone. Cell phones also emit RF radiation **energy** when using Wi-Fi and/or Bluetooth, but at lower levels.

RF energy is not as powerful or as damaging to cells or DNA as some other kinds of electromagnetic radiation, such as X-rays or UV rays from the sun. Some scientific studies have, however, suggested that there may be increased health risks from exposure to RF energy.

How can you reduce your exposure?

Keep your phone away from your body. Keeping your phone just a few feet away from you can make a big difference.

- ***When you talk on your cell phone, avoid holding it to your head—use the speakerphone or a headset instead.*** Wireless (Bluetooth) and wired headsets emit much less RF energy than cell phones.
- ***Send text messages instead of talking on the phone.***
- ***If you are streaming or if you are downloading or sending large files, try to keep the phone away from your head and body.***
- ***Carry your cell phone in a backpack, briefcase, or purse; NOT in a pocket, bra or belt holster.*** Because your phone's antenna tries to stay connected with a cell tower whenever it's on, it emits some RF energy even when you are not using it. It does not emit RF energy when it's in airplane mode. (Airplane mode turns off cellular, Wi-Fi, and Bluetooth.)

Reduce or avoid using your cell phone when it is sending out high levels of RF energy. This happens mainly when:

- ***You see only one or two bars displayed.*** Cell phones put out more RF energy to connect with cell towers when the signal is weak. If you must use your phone when the signal is weak, try to follow the other guidance on this page.
- ***You are in a fast-moving car, bus, or train.*** Your phone puts out more RF energy to maintain connections to avoid dropping calls as it switches connections from one cell tower to the next unless it is in airplane mode.
- ***You are streaming audio or video, or downloading or sending large files.*** To watch movies or listen to playlists on your phone, download them first, then switch to airplane mode while you watch or listen.

Don't sleep with your phone in your bed or near your head. Unless the phone is off or in airplane mode, keep it at least a few feet away from your bed.

Take off the headset when you're not on a call. Headsets release small amounts of RF energy even when you are not using your phone.



What about children?

Children may be more at risk for harm from exposure to RF energy because:

- RF energy can reach a larger area of a child's brain than an adult's brain.
- A child's brain and body grow and develop through the teen years. During this time, the body may be more easily affected by RF energy and the effect may be more harmful and longer lasting.
- A child who uses a cell phone will have many more years of exposure to RF energy in his or her lifetime than someone who started using a cell phone as an adult.

There is not a lot of research about the effects of cell phone RF energy on children or teenagers, but a few studies have shown that there may be hearing loss or ringing in the ears, headaches, and decreased general well-being.

Don't rely on a "radiation shield" or other products claiming to block RF energy, electromagnetic fields, or radiation from cell phones. According to the U.S. Federal Trade Commission, products that interfere with the phone's signal may force it to work harder and emit more RF energy in order to stay connected, possibly increasing your exposure.

For more information, please visit these websites:

U.S. Centers for Disease Control and Prevention:

www.cdc.gov/nceh/radiation/cell_phones._faq.html

www.cdc.gov/nceh/radiation/factsheets/224613_faq_cell-phones-and-your-health.pdf

U.S. Federal Communications Commission (FCC):

www.fcc.gov/engineering-technology/electromagnetic-compatibility-division/radio-frequency-safety/faq/rf-safety

(The FCC is responsible for regulating RF emissions from cell phones; the regulations were last updated in 1996.)

U.S. Federal Trade Commission (FTC):

www.consumer.ftc.gov/articles/0109-cell-phone-radiation-scams

World Health Organization:

www.who.int/mediacentre/factsheets/fs193/en/

American Academy of Pediatrics

www.healthychildren.org/English/safety-prevention/all-around/Pages/Cell-Phone-Radiation-Childrens-Health.aspx

Consumer Reports:

www.consumerreports.org/cro/smartphones/cell-phone-radiation



How to Reduce Exposure to Radiofrequency Energy from Cell Phones



The use of cell phones has increased dramatically in recent years, including among children and young adults. These phones put out radio frequency (RF) energy.

Some scientists and public health officials believe RF energy may affect human

health. This guidance document describes RF energy, lists some of the potential health concerns, and provides guidance on how people can reduce their exposure.

Why are people concerned about exposure to RF energy from cell phones?

Although the science is still evolving, some laboratory experiments and human health studies have suggested the possibility that long-term, high use of cell phones may be linked to certain types of cancer and other health effects, including:

- brain cancer and tumors of the acoustic nerve (needed for hearing and maintaining balance) and salivary glands
- lowers sperm counts and inactive or less mobile sperm
- headaches and effects on learning and memory, hearing, behavior, and sleep

These studies do not establish the link definitely, however, and scientists disagree about whether cell phones cause these health problems and how great the risks might be. This document is intended to provide guidance for those people who want to reduce their own and their families' exposures to RF energy from cell phones, despite this uncertainty.

What is RF energy?

Cell phones work by sending and receiving signals to and from cell phone towers. These signals are a form of electromagnetic radiation called radiofrequency (RF) energy. Other sources of RF energy include cell phone towers, TV and radio transmitters, smart meters, and microwave ovens. When a phone sends signals to a tower, the RF energy goes from the phone's antenna out in all directions, including into the head and body of the person using the phone. Cell phones also emit RF energy when using Wi-Fi and/or Bluetooth, but at lower levels.

RF energy is not as powerful or as damaging to cells or DNA as some other kinds of electromagnetic radiation, such as X-rays or UV rays from the sun. Some scientific studies have, however, suggested that there may be increased health risks from exposure to RF energy.

How can you reduce your exposure?

Keep your phone away from your body. Keeping your phone just a few feet away from you can make a big difference.

- **When you talk on your cell phone, avoid holding it to your head—use the speakerphone or a headset instead.** Wireless (Bluetooth) and wired headsets emit much less RF energy than cell phones.
- **Send text messages instead of talking on the phone.**
- **If you are streaming or if you are downloading or sending large files, try to keep the phone away from your head and body.**
- **Carry your cell phone in a backpack, briefcase, or purse; NOT in a pocket, bra or belt holster.** Because your phone's antenna tries to stay connected with a cell tower whenever it's on, it emits some RF energy even when you are not using it. It does not emit RF energy when it's in airplane mode. (Airplane mode turns off cellular, Wi-Fi, and Bluetooth.)

Reduce or avoid using your cell phone when it is sending out high levels of RF energy. This happens mainly when:

- **You see only one or two bars displayed.** Cell phones put out more RF energy to connect with cell towers when the signal is weak. If you must use your phone when the signal is weak, try to follow the other guidance on this page.
- **You are in a fast-moving car, bus, or train.** Your phone puts out more RF energy to maintain connections to avoid dropping calls as it switches connections from one cell tower to the next unless it is in airplane mode.
- **You are streaming audio or video, or downloading or sending large files.** To watch movies or listen to playlists on your phone, download them first, then switch to airplane mode while you watch or listen.

Don't sleep with your phone in your bed or near your head. Unless the phone is off or in airplane mode, keep it at least a few feet away from your bed.

Take off the headset when you're not on a call. Headsets release small amounts of RF energy even when you are not using your phone.



What about children?

Children may be more at risk for harm from exposure to RF energy because:

- RF energy can reach a larger area of a child's brain than an adult's brain.
- A child's brain and body grow and develop through the teen years. During this time, the body may be more easily affected by RF energy and the effect may be more harmful and longer lasting.
- A child who uses a cell phone will have many more years of exposure to RF energy in his or her lifetime than someone who started using a cell phone as an adult.

There is not a lot of research about the effects of cell phone RF energy on children or teenagers, but a few studies have shown that there may be hearing loss or ringing in the ears, headaches, and decreased general well-being.

Don't rely on a "radiation shield" or other products claiming to block RF energy, electromagnetic fields, or radiation from cell phones. According to the U.S. Federal Trade Commission, products that interfere with the phone's signal may force it to work harder and emit more RF energy in order to stay connected, possibly increasing your exposure.

For more information, please visit these websites:

U.S. Centers for Disease Control and Prevention:

www.cdc.gov/nceh/radiation/cell_phones._faq.html

www.cdc.gov/nceh/radiation/factsheets/224613_faq_cell-phones-and-your-health.pdf

U.S. Federal Communications Commission (FCC):

www.fcc.gov/engineering-technology/electromagnetic-compatibility-division/radio-frequency-safety/faq/rf-safety

(The FCC is responsible for regulating RF emissions from cell phones; the regulations were last updated in 1996.)

U.S. Federal Trade Commission (FTC):

www.consumer.ftc.gov/articles/0109-cell-phone-radiation-scams

World Health Organization:

www.who.int/mediacentre/factsheets/fs193/en/

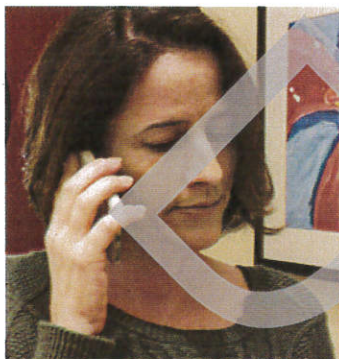
American Academy of Pediatrics

www.healthychildren.org/English/safety-prevention/all-around/Pages/Cell-Phone-Radiation-Childrens-Health.aspx

Consumer Reports:

www.consumerreports.org/cro/smartphones/cell-phone-radiation

How to Reduce Exposure to Radiofrequency Energy from Cell Phones



The use of cell phones has increased dramatically in recent years, including among children and young adults. These phones put out radio frequency (RF) energy (a kind of radiation). As use has increased, our exposures to this kind of radiation have also increased.

Some scientists and public health officials believe RF energy may affect human health. This fact sheet describes RF energy, lists some of the main health concerns, and provides guidance on how people can reduce their exposures.

Why are people concerned about exposure to RF energy from cell phones?

Some laboratory experiments and human health studies show that exposure to RF energy may raise risks for several diseases and other health problems, including:

- brain cancer and tumors of the acoustic nerve (needed for hearing and maintaining balance) and salivary glands
- decreased numbers and quality of sperm, which could affect a man's ability to get a woman pregnant
- headaches and effects on learning and memory, hearing, behavior, and sleep

Studies about RF energy from cell phones do not all show the same results. Therefore, scientists disagree about how big the risks are and whether cell phones cause these diseases and other health problems. However, some people may still want to reduce their own and their families' exposures to RF energy from cell phones.

What is RF energy?

Cell phones work by sending and receiving signals to and from cell phone towers. These signals are a form of electromagnetic radiation called radiofrequency (RF) energy. Other sources of RF energy include cell phone towers, TV and radio transmitters, smart meters, and microwave ovens. When a phone sends signals to a tower, the RF energy goes from the phone's antenna out in all directions, including into the head and body of the person using the phone.

Some scientific studies have shown that there may be increased health risks from exposure to RF energy. However, RF energy is not as powerful or as damaging to cells or DNA as some other kinds of electromagnetic radiation, such as X-rays or UV rays from the sun.

How can you reduce your exposure?

Keep your phone away from your body. Keeping your phone just a few feet away from you can make a big difference.

- **When you talk on your cell phone, avoid holding it to your head—use the speakerphone or a headset instead.** Wireless (Bluetooth) and wired headsets emit much less RF energy than cell phones.
- **Send text messages instead of talking on the phone.**
- **If you are streaming or if you are downloading or sending large files, try to keep the phone away from your head and body.**
- **Carry your cell phone in a backpack, briefcase, or purse; NOT in a pocket, bra or belt holster.** Because your phone's antenna tries to stay connected with a cell tower whenever it's on, it emits some RF energy even when you are not using it. It does not emit RF energy when it's in airplane mode with Wi-Fi and Bluetooth turned off.

Reduce or avoid using your cell phone when it is sending out high levels of RF energy. This happens mainly when:

- **You see only one or two bars displayed.** Cell phones put out more RF energy to connect with cell towers when the signal is weak. If you must use your phone when the signal is weak, try to follow the other guidance on this page.
- **You are in a fast-moving car, bus or train.** Your phone puts out more RF energy to avoid dropping the call as it switches connections from one cell tower to the next (unless it is in airplane mode with Wi-Fi and Bluetooth turned off).
- **You stream audio or video, or you download or send large files.** To watch movies or listen to playlists on your phone, download them first, then switch to airplane mode while you watch or listen.

Don't sleep with your phone in your bed or near your head. Unless the phone is off or in airplane mode (with Wi-Fi and Bluetooth turned off), keep it at least a few feet away from your bed.

Take off the headset when you're not on a call. Headsets release small amounts of RF energy even when you are not using your phone.



What about children?

Children may be more at risk for harm from exposure to RF energy because:

- RF energy can reach a larger area of a child's brain than an adult's brain.
- A child's brain and body grow and develop through the teen years. During this time, the body may be more easily affected by RF energy and the effect may be more harmful and last longer.
- A child who uses a cell phone will have many more years of exposure to RF energy in his or her lifetime than someone who started using a cell phone as an adult.

There is not a lot of research about the effects of cell phone RF energy on children or teenagers, but a few studies have shown that there may be hearing loss or ringing in the ears, headaches, and decreased general well-being. Since young people might be more at risk, parents may want to reduce their child's exposures.

Don't rely on a "radiation shield" or other products claiming to block RF energy, electromagnetic fields, or radiation from cell phones. According to the U.S. Federal Trade Commission, products that interfere with the phone's signal may force it to work harder and emit more RF energy in order to stay connected, possibly increasing your exposure.

For more information, please visit these websites:

U.S. Centers for Disease Control and Prevention:

www.cdc.gov/nceh/radiation/cell_phones_faq.html

www.cdc.gov/nceh/radiation/factsheets/224613_faq_cell-phones-and-your-health.pdf

U.S. Federal Communications Commission (FCC):

www.fcc.gov/engineering-technology/electromagnetic-compatibility-division/radio-frequency-safety/faq/rf-safety

(The FCC is responsible for regulating RF emissions from cell phones; the regulations were last updated in 1996.)

U.S. Federal Trade Commission (FTC):

www.consumer.ftc.gov/articles/0109-cell-phone-radiation-scams

World Health Organization:

www.who.int/mediacentre/factsheets/fs193/en/

American Academy of Pediatrics

www.healthychildren.org/English/safety-prevention/all-around/Pages/Cell-Phone-Radiation-Childrens-Health.aspx

Consumer Reports:

www.consumerreports.org/cro/smartphones/cell-phone-radiation



How to Reduce Exposure to Radiofrequency Energy from Cell Phones



The use of cell phones has increased dramatically in recent years, including among children and young adults. These phones put out radio frequency (RF) energy (a kind of radiation).

Some scientists and public health officials believe RF energy may affect human

health. This guidance document describes RF energy, lists some of the main health concerns, and provides guidance on how people can reduce their exposure.

Why are people concerned about exposure to RF energy from cell phones?

Over the last 15 years some laboratory experiments and human health studies have suggested the possibility that long-term, high use of cell phones may be linked to certain types of cancer and other health effects, including:

- brain cancer and tumors of the acoustic nerve (needed for hearing and maintaining balance) and salivary glands
- lower sperm counts and inactive or less mobile sperm
- headaches and effects on learning and memory, hearing, behavior, and sleep

These studies do not establish the link definitely, however, and scientists disagree about whether cell phones cause these health problems and how great the risks might be. This document is intended to provide guidance for those people who want to reduce their own and their families' exposures to RF energy from cell phones, despite this uncertainty.

What is RF energy?

Cell phones work by sending and receiving signals to and from cell phone towers. These signals are a form of electromagnetic radiation called radiofrequency (RF) energy. Other sources of RF energy include cell phone towers, TV and radio transmitters, smart meters, and microwave ovens. When a phone sends signals to a tower, the RF energy goes from the phone's antenna out in all directions, including into the head and body of the person using the phone. Cell phones also emit RF radiation when using Wi-Fi and/or Bluetooth, but at lower levels.

RF energy is not as powerful or as damaging to cells or DNA as some other kinds of electromagnetic radiation, such as X-rays or UV rays from the sun. Some scientific studies have, however, suggested that there may be increased health risks from exposure to RF energy.

How can you reduce your exposure?

Keep your phone away from your body. Keeping your phone just a few feet away from you can make a big difference.

- **When you talk on your cell phone, avoid holding it to your head—use the speakerphone or a headset instead.** Wireless (Bluetooth) and wired headsets emit much less RF energy than cell phones.
- **Send text messages instead of talking on the phone.**
- **If you are streaming or if you are downloading or sending large files, try to keep the phone away from your head and body.**
- **Carry your cell phone in a backpack, briefcase, or purse; NOT in a pocket, bra or belt holster.** Because your phone's antenna tries to stay connected with a cell tower whenever it's on, it emits some RF energy even when you are not using it. It does not emit RF energy when it's in airplane mode. (Airplane mode turns off cellular, Wi-Fi, and Bluetooth.)

Reduce or avoid using your cell phone when it is sending out high levels of RF energy. This happens mainly when:

- **You see only one or two bars displayed.** Cell phones put out more RF energy to connect with cell towers when the signal is weak. If you must use your phone when the signal is weak, try to follow the other guidance on this page.
- **You are in a fast-moving car, bus, or train.** Your phone puts out more RF energy to maintain connections to avoid dropping calls as it switches connections from one cell tower to the next unless it is in airplane mode.
- **You are streaming audio or video, or downloading or sending large files.** To watch movies or listen to playlists on your phone, download them first, then switch to airplane mode while you watch or listen.

Don't sleep with your phone in your bed or near your head. Unless the phone is off or in airplane mode, keep it at least a few feet away from your bed.

Take off the headset when you're not on a call. Headsets release small amounts of RF energy even when you are not using your phone.



What about children?

Children may be more at risk for harm from exposure to RF energy because:

- RF energy can reach a larger area of a child's brain than an adult's brain.
- A child's brain and body grow and develop through the teen years. During this time, the body may be more easily affected by RF energy and the effect may be more harmful and longer lasting.
- A child who uses a cell phone will have many more years of exposure to RF energy in his or her lifetime than someone who started using a cell phone as an adult.

There is not a lot of research about the effects of cell phone RF energy on children or teenagers, but a few studies have shown that there may be hearing loss or ringing in the ears, headaches, and decreased general well-being.

Don't rely on a "radiation shield" or other products claiming to block RF energy, electromagnetic fields, or radiation from cell phones. According to the U.S. Federal Trade Commission, products that interfere with the phone's signal may force it to work harder and emit more RF energy in order to stay connected, possibly increasing your exposure.

For more information, please visit these websites:

U.S. Centers for Disease Control and Prevention:

www.cdc.gov/nceh/radiation/cell_phones._faq.html

www.cdc.gov/nceh/radiation/factsheets/224613_faq_cell-phones-and-your-health.pdf

U.S. Federal Communications Commission (FCC):

www.fcc.gov/engineering-technology/electromagnetic-compatibility-division/radio-frequency-safety/faq/rf-safety

(The FCC is responsible for regulating RF emissions from cell phones; the regulations were last updated in 1996.)

U.S. Federal Trade Commission (FTC):

www.consumer.ftc.gov/articles/0109-cell-phone-radiation-scams

World Health Organization:

www.who.int/mediacentre/factsheets/fs193/en/

American Academy of Pediatrics

www.healthychildren.org/English/safety-prevention/all-around/Pages/Cell-Phone-Radiation-Childrens-Health.aspx

Consumer Reports:

www.consumerreports.org/cro/smartphones/cell-phone-radiation



How to Reduce Exposure to Radiofrequency Energy from Cell Phones



The use of cell phones has increased dramatically in recent years, including among children and young adults. These phones put out radio frequency (RF) energy (a kind of radiation).

~~While Some scientists and are still debating the possible link between cell phone use and health problems, public health officials believe RF energy may affect human~~

~~health.~~ This guidance document describes RF energy, lists some of the **main potential** health concerns, and provides guidance on how people can reduce their exposure.

Why are people concerned about exposure to RF energy from cell phones?

~~Although the science is still evolving, Over the last 15 years~~ some laboratory experiments and human health studies have suggested the possibility that long-term, high use of cell phones may be linked to certain types of cancer and other health effects, including:

- brain cancer and tumors of the acoustic nerve (needed for hearing and maintaining balance) and salivary glands
- lowersperm counts and inactive or less mobile sperm
- headaches and effects on learning and memory, hearing, behavior, and sleep

These studies do not establish the link definitely, however, and scientists disagree about whether cell

What is RF energy?

Cell phones work by sending and receiving signals to and from cell phone towers. These signals are a form of electromagnetic radiation called radiofrequency (RF) energy. Other sources of RF energy include cell phone towers, TV and radio transmitters, smart meters, and microwave ovens. When a phone sends signals to a tower, the RF energy goes from the phone's antenna out in all directions, including into the head and body of the person using the phone. Cell phones also emit RF **radiation energy** when using Wi-Fi and/or Bluetooth, but at lower levels.

RF energy is not as powerful or as damaging to cells or DNA as some other kinds of electromagnetic radiation, such as X-rays or UV rays from the sun. Some scientific studies have, however, suggested that there may be increased health risks from exposure to RF energy.

phones cause these health problems and how great the risks might be. This document is intended to provide guidance for those people who want to reduce their own and their families' exposures to RF energy from cell phones, despite this uncertainty.

DRAFT

How can you reduce your exposure?

Keep your phone away from your body. Keeping your phone just a few feet away from you can make a big difference.

- ***When you talk on your cell phone, avoid holding it to your head—use the speakerphone or a headset instead.*** Wireless (Bluetooth) and wired headsets emit much less RF energy than cell phones.
- ***Send text messages instead of talking on the phone.***
- ***If you are streaming or if you are downloading or sending large files, try to keep the phone away from your head and body.***
- ***Carry your cell phone in a backpack, briefcase, or purse; NOT in a pocket, bra or belt holster.*** Because your phone's antenna tries to stay connected with a cell tower whenever it's on, it emits some RF energy even when you are not using it. It does not emit RF energy when it's in airplane mode. (Airplane mode turns off cellular, Wi-Fi, and Bluetooth.)

Reduce or avoid using your cell phone when it is sending out high levels of RF energy. This happens mainly when:

- ***You see only one or two bars displayed.*** Cell phones put out more RF energy to connect with cell towers when the signal is weak. If you must use your phone when the signal is weak, try to follow the other guidance on this page.
- ***You are in a fast-moving car, bus, or train.*** Your phone puts out more RF energy to maintain connections to avoid dropping calls as it switches connections from one cell tower to the next unless it is in airplane mode.
- ***You are streaming audio or video, or downloading or sending large files.*** To watch movies or listen to playlists on your phone, download them first, then switch to airplane mode while you watch or listen.

Don't sleep with your phone in your bed or near your head. Unless the phone is off or in airplane mode, keep it at least a few feet away from your bed.

Take off the headset when you're not on a call. Headsets release small amounts of RF energy even when you are not using your phone.



What about children?

Children may be more at risk for harm from exposure to RF energy because:

- RF energy can reach a larger area of a child's brain than an adult's brain.
- A child's brain and body grow and develop through the teen years. During this time, the body may be more easily affected by RF energy and the effect may be more harmful and longer lasting.
- A child who uses a cell phone will have many more years of exposure to RF energy in his or her lifetime than someone who started using a cell phone as an adult.

There is not a lot of research about the effects of cell phone RF energy on children or teenagers, but a few studies have shown that there may be hearing loss or ringing in the ears, headaches, and decreased general well-being.

Don't rely on a "radiation shield" or other products claiming to block RF energy, electromagnetic fields, or radiation from cell phones. According to the U.S. Federal Trade Commission, products that interfere with the phone's signal may force it to work harder and emit more RF energy in order to stay connected, possibly increasing your exposure.

For more information, please visit these websites:

U.S. Centers for Disease Control and Prevention:

www.cdc.gov/nceh/radiation/cell_phones._faq.html

www.cdc.gov/nceh/radiation/factsheets/224613_faq_cell-phones-and-your-health.pdf

U.S. Federal Communications Commission (FCC):

www.fcc.gov/engineering-technology/electromagnetic-compatibility-division/radio-frequency-safety/faq/rf-safety

(The FCC is responsible for regulating RF emissions from cell phones; the regulations were last updated in 1996.)

U.S. Federal Trade Commission (FTC):

www.consumer.ftc.gov/articles/0109-cell-phone-radiation-scams

World Health Organization:

www.who.int/mediacentre/factsheets/fs193/en/

American Academy of Pediatrics

www.healthychildren.org/English/safety-prevention/all-around/Pages/Cell-Phone-Radiation-Childrens-Health.aspx

Consumer Reports:

www.consumerreports.org/cro/smartphones/cell-phone-radiation

How to Reduce Exposure to Radiofrequency Energy from Cell Phones



The use of cell phones has increased dramatically in recent years, including among children and young adults. These phones put out radio frequency (RF) energy (a kind of radiation). As use has increased, our exposures to this kind of radiation have also increased.

Some scientists and public health officials believe RF energy may affect human health. This fact sheet describes RF energy, lists some of the main health concerns, and provides guidance on how people can reduce their exposures.

Why are people concerned about exposure to RF energy from cell phones?

Some laboratory experiments and human health studies indicate that exposure to RF energy may raise risks for several diseases and other health problems, including:

- brain cancer and tumors of the acoustic nerve (needed for hearing and maintaining balance) and salivary glands
- decreased numbers and quality of sperm, which could affect a man's ability to get a woman pregnant
- headaches and effects on learning and memory, hearing, behavior, and sleep

Studies about RF energy from cell phones do not all show the same results. Therefore, scientists disagree about how big the risks are and whether cell phones cause these diseases and other health problems. However, some people may still want to reduce their own and their families' exposures to RF energy from cell phones.

What is RF energy?

Cell phones work by sending and receiving signals to and from cell phone towers. These signals are a form of electromagnetic radiation called radiofrequency (RF) energy. Other sources of RF energy include cell phone towers, TV and radio transmitters, smart meters, and microwave ovens. When a phone sends signals to a tower, the RF energy goes from the phone's antenna out in all directions, including into the head and body of the person using the phone.

Some scientific studies have shown increased health risks from exposure to RF energy. However, RF energy is not as powerful or as damaging to cells or DNA as some other kinds of electromagnetic radiation, such as X-rays or UV rays from the sun.

How can you reduce your exposure?

Keep your phone away from your body. Keeping your phone just a few feet away from you can make a big difference.

- **When you talk on your cell phone, avoid holding it to your head—use the speakerphone or a headset instead.** Wireless (Bluetooth) and wired headsets emit much less RF energy than cell phones.
- **Send text messages instead of talking on the phone.**
- **If you are streaming or if you are downloading or sending large files, try to keep the phone away from your head and body.**
- **Carry your cell phone in a backpack, briefcase, or purse; NOT in a pocket, bra or belt holster.** Because your phone's antenna tries to stay connected with a cell tower whenever it's on, it emits some RF energy even when you are not using it. It does not emit RF energy when it's in airplane mode with Wi-Fi and Bluetooth turned off.

Reduce or avoid using your cell phone when it is sending out high levels of RF energy. This happens mainly when:

- **You see only one or two bars displayed.** Cell phones put out more RF energy to connect with cell towers when the signal is weak. If you must use your phone when the signal is weak, try to follow the other guidance on this page.
- **You are in a fast-moving car, bus or train.** Your phone puts out more RF energy to avoid dropping the call as it switches connections from one cell tower to the next (unless it is in airplane mode with Wi-Fi and Bluetooth turned off).
- **You stream audio or video, or you download or send large files.** To watch movies or listen to playlists on your phone, download them first, then switch to airplane mode while you watch or listen.

Don't sleep with your phone in your bed or near your head. Unless the phone is off or in airplane mode (with Wi-Fi and Bluetooth turned off), keep it at least a few feet away from your bed.

Take off the headset when you're not on a call. Headsets release small amounts of RF energy even when you are not using your phone.



What about children?

Children may be more at risk for harm from exposure to RF energy because:

- RF energy can reach a larger area of a child's brain than an adult's brain.
- A child's brain and body grow and develop through the teen years. During this time, the body may be more easily affected by RF energy and the effect may be more harmful and last longer.
- A child who uses a cell phone will have many more years of exposure to RF energy in his or her lifetime than someone who started using a cell phone as an adult.

There is not a lot of research about the effects of cell phone RF energy on children or teenagers, but a few studies have shown hearing loss or ringing in the ears, headaches, and decreased general well-being. Since young people might be more at risk, parents may want to reduce their child's exposures.

Don't rely on a "radiation shield" or other products claiming to block RF energy, electromagnetic fields, or radiation from cell phones. According to the U.S. Federal Trade Commission, products that interfere with the phone's signal may force it to work harder and emit more RF energy in order to stay connected, possibly increasing your exposure.

For more information, please visit these websites:

U.S. Centers for Disease Control and Prevention:

www.cdc.gov/nceh/radiation/cell_phones_faq.html

www.cdc.gov/nceh/radiation/factsheets/224613_faq_cell-phones-and-your-health.pdf

U.S. Federal Communications Commission (FCC):

www.fcc.gov/engineering-technology/electromagnetic-compatibility-division/radio-frequency-safety/faq/rf-safety

(The FCC is responsible for regulating RF emissions from cell phones; the regulations were last updated in 1996.)

U.S. Federal Trade Commission (FTC):

www.consumer.ftc.gov/articles/0109-cell-phone-radiation-scams

World Health Organization:

www.who.int/mediacentre/factsheets/fs193/en/

American Academy of Pediatrics

www.healthychildren.org/English/safety-prevention/all-around/Pages/Cell-Phone-Radiation-Childrens-Health.aspx

Consumer Reports:

www.consumerreports.org/cro/smartphones/cell-phone-radiation