



 **ENVIRONMENTAL
HEALTH TRUST**



The Link Between Cancer and Cell Phones

Listen to Dr. Devra Davis on the Dhru Purohit podcast discuss the latest science on cancer and cell phones.

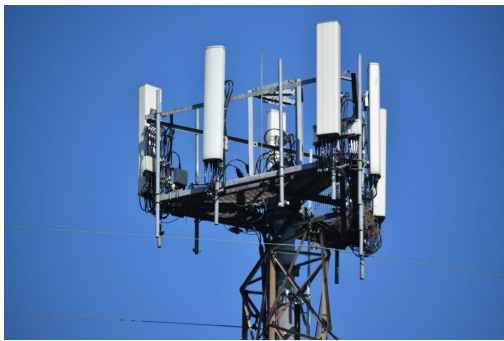
Watch [the interview](#) and listen to the [full podcast](#).



Is Radiation From Our Devices Dangerous? | Talking Point

Dr. Davis is featured on Channel News Asia's report by Steve Chia on health effects from cell phone radiation.

Dr. Davis' interview begins at [13:26 in the 22-minute segment](#).



New Hampshire Lawmakers Debate Cell Tower Setback Law

EHT's Theodora Scarato testified to members of the New Hampshire House of Representatives on HB 1644, which would require cell towers to be placed at least 1,640 feet away from schools, hospitals, residential areas, and other locations. The bill would also establish a registry for people experiencing symptoms of radiation exposure.

[Watch EHT's Video of Our Submitted Testimony.](#)



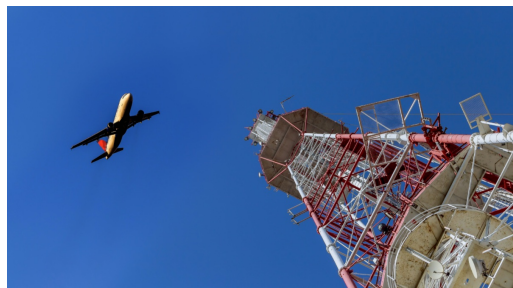
New Report: 5G is Not So Green and Could Increase Energy Use

The University of Sussex Business School finds that the claim that 5G is "green" technology is not backed by strong, publicly available, fully transparent evidence.

[Learn More About the Study](#)

[EHT's Resources on 5G Climate Impacts](#)

[PDF of EHT's Flyer on 5G and Climate](#)



Times of Israel: Just Why is the 5G Rollout in Trouble in the USA?

EHT scientific advisor and physics professor Paul Ben Ishai explains what went wrong with the 5G deployment around airports in the U.S.

Read [the blog](#) by Paul Ben Ishai PhD.



Wireless Safety Standards Should Protect the People!

It's easy to let your representatives know that you care about public safety and exposure to wireless radiation. With a few strokes of the digital pen you can send a letter expressing your concern.

[Join our letter writing campaign](#) today.

5G IS NOT GREEN

**It harms birds.
It harms bees.
It harms trees.
Thousands of new cell
towers will consume
more energy.**

**ENVIRONMENTAL
HEALTH TRUST**

Share our graphics and YouTube videos in your community.
Connect with us to spread awareness.



Scientists Call For Retraction of Inaccurate Cell Phone Radiation Cancer Review

Investigative Reporter Paul Thacker published an article in the [Disinformation Chronicle](#) as well as the [Journal of Scientific Practice and Integrity](#) on a recent radio frequency radiation/cancer "review" published by David Robert Grimes. Grimes [did a paid advertisement for Vodafone](#) in 2020, downplaying health effects from 5G.

Environmental Health Trust [sent a letter](#) to the editor-in-chief of the Journal of the American Medical Association Oncology (JAMA - Oncology) calling for a retraction of the inaccurate review. In our letter we outline the inaccurate information and explain that "our scientific understanding of electromagnetic radiation is in a paradigm shift. The ionizing versus non-ionizing model is no longer relevant to understanding the health effects of RFR (radiofrequency radiation)."

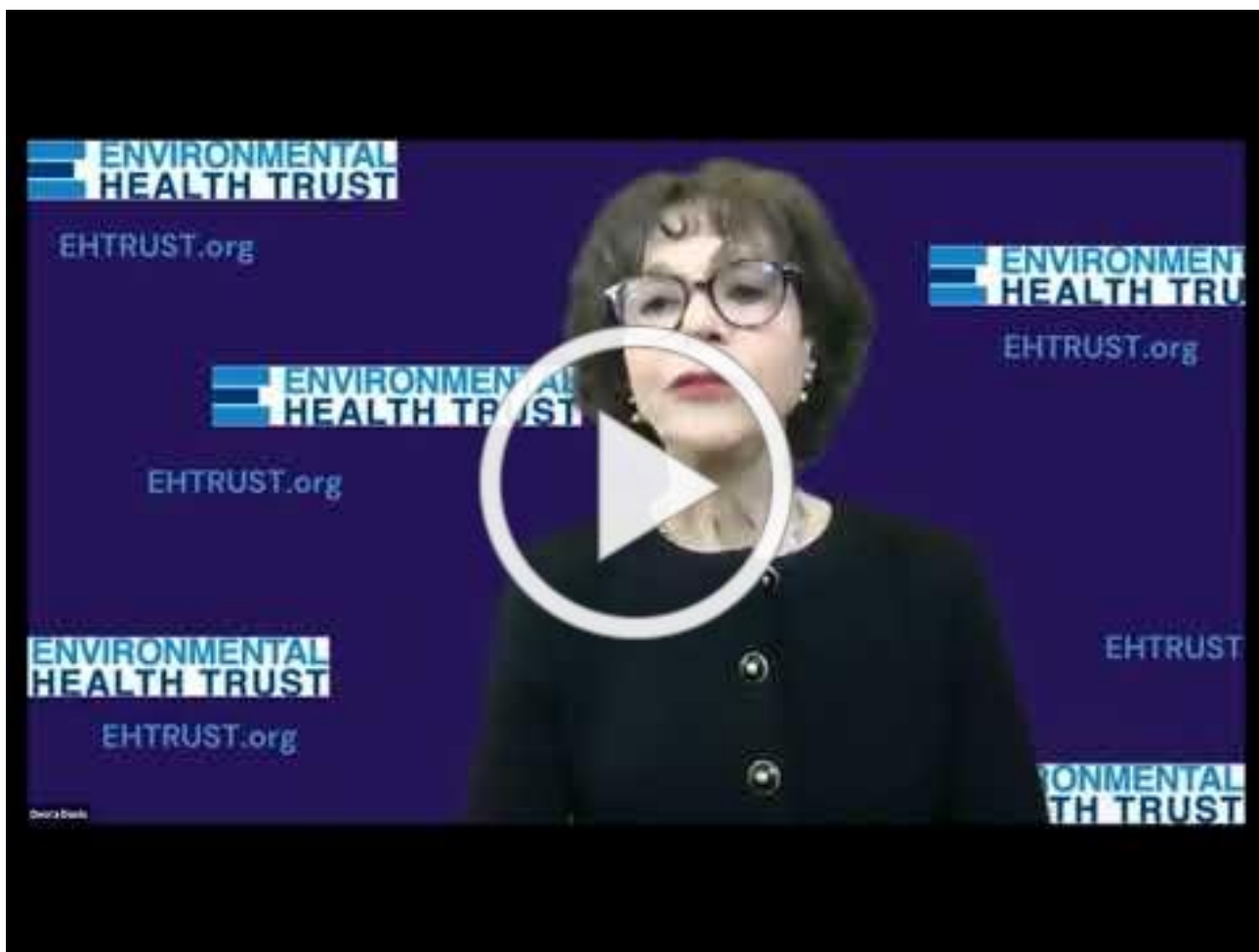
Microwave News also published [an investigation](#) on the flawed "review" and found that although Grimes represented himself as affiliated with Oxford University, the University confirmed he did not hold a position there.

Dr. Joel Moskowitz of the University of California Berkeley also [sent a letter](#) stating, "the journal should change the paper's title to accurately reflect its contents (e.g., "Radiofrequency radiation and cancer: Telecom industry talking points."

Kent Chamberlin PhD also wrote a [letter to JAMA Oncology](#) highlighting the findings of the New Hampshire Commission on 5G.

[Read the letters.](#)

Watch Dr. Devra Davis Talk About Digital PTSD



Very high radiofrequency radiation at Skeppsbron in Stockholm, Sweden from mobile phone base station antennas positioned close to pedestrians' heads

Tarmo Koppel^a, Mikko Ahonen^b, Michael Carlberg^c, Lennart Hardell^c 

Major New Study Finds Cell Antennas Close To Ground Create High Radiation Exposures

A new study published in the journal Environmental Research by team of international experts – Tarmo Koppel PhD, Mikko Ahonen PhD, Michael Carlberg MSc and Lennart Hardell MD, PhD – finds levels of radiofrequency (RF) radiation are increasing from the proliferation of cell antennas mounted close to the ground on buildings and poles. The researchers created heat maps of (cell tower antenna) RF radiation measurements in Stockholm and summarized the results of several recent studies on health effects. “These risks are relevant to those people working or living in the highly exposed places – in this study they are 1) people living in the apartments across the street from the antennas, 2) workers of the shops across the street and beneath the antennas.”

Protect The Ones You Love

*Our
goal is
to save
lives.*



DONATE